



County	Laurens
Municipality	City
Zoning	Industrial
Tax Map ID	901-36-01-001
Park Status	Stand Alone Site
Location	Little Acres Road
Landuse	Undeveloped Land (N) Interstate (S) Interstate (E) Interstate (W)

Pricing

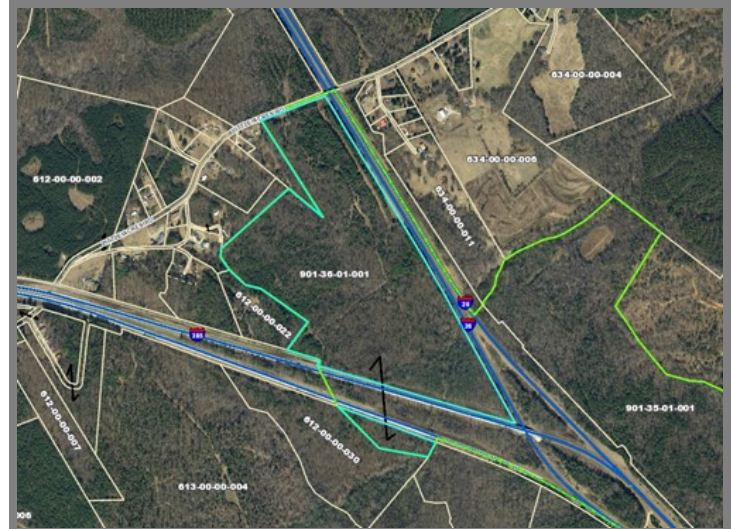
Pricing	For Sale
Sale Price	\$20,000 Per Acre

Details

Total Site Acreage	81.40
Developable Acreage	81.40
Additional Acreage Available	Undetermined
Minimum Divisible Acreage	10.00
Max Contiguous Developable Site	81.40
Maximum Building Size	Undetermined
Site Improvements	Forested
Elevation Range	582' to 582'
Primary Soil Type	Complex
Palmetto Sites Program	No

Due Diligence

Cultural Resource Identification Survey	Not Completed
Boundary Survey	Not Completed
Protected Species Assessment	Not Completed
Preliminary Geotechnical Exploration	Not Completed
Phase 1 EPA Site Assessment	Not Completed
Topographical Survey	Not Completed
Wetlands Delineation	Not Completed



Utilities

Water Provider	City of Clinton
Wastewater Provider	City of Clinton
Natural Gas Provider	Service Not Available
Electric Provider	City of Clinton
Telecomm Provider	Service Not Available

Transportation

Road Serving Building	Little Acres Road (2 Lanes)
Rail Access	No
Runway Access	No
Barge Access	No
Nearest Interstate	I-26 (1.00 Mile)
Nearest Port	Charleston (169.00 Miles)
Nearest Commercial Airport	Greenville-Spartanburg International (38.00 Miles)
Nearest Intermodal Facility	NS Greer (38.00 Miles)